

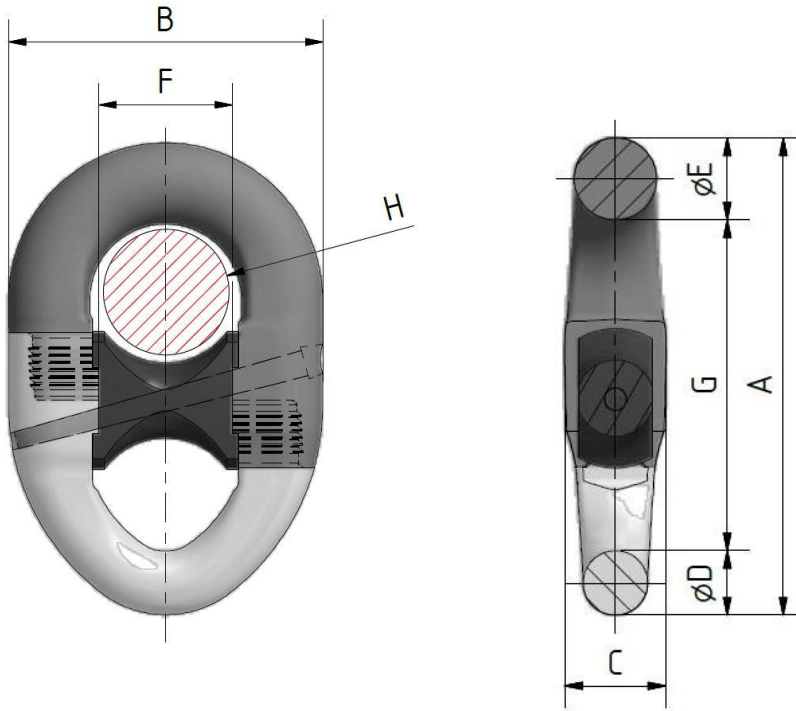
Kenter Type Connection



Raptor Anchor Shackle

DNV-GL Type Approved

Offshore accessory to be used for Temporary and Mobile Mooring as defined in DNV-OS-E301, Position Mooring



chain dia.	A	B	C	D	E	F	G	H	R4 PL kN	R4 MBL kN	R4S PL kN	R4S MBL kN	R5 PL kN	R5 MBL kN
76	619	412	130	83	106	175	430	160	4731	6001	5257	6658	5498	7009
84	685	455	141	90	118	193	477	180	5682	7208	6313	7997	6602	8418
89	725	482	152	98	125	205	502	190	6310	8004	7011	8881	7332	9348
95	745	510	163	98	130	217	517	200	7096	9001	7884	9987	8246	10512
120	978	650	205	132	168	276	678	260	10700	13573	11889	15059	12434	15852



- Type approved by: **DNV-GL**
- Application: **Temporary and Mobile Mooring**
- Manufactured & Tested: **in Germany by Feuero**
- Material: **Forged Steel - Grade R4, R4S, R5**
- Features: **Non-Standard Kenter Shackles to connect mooring chains to anchor shackles**